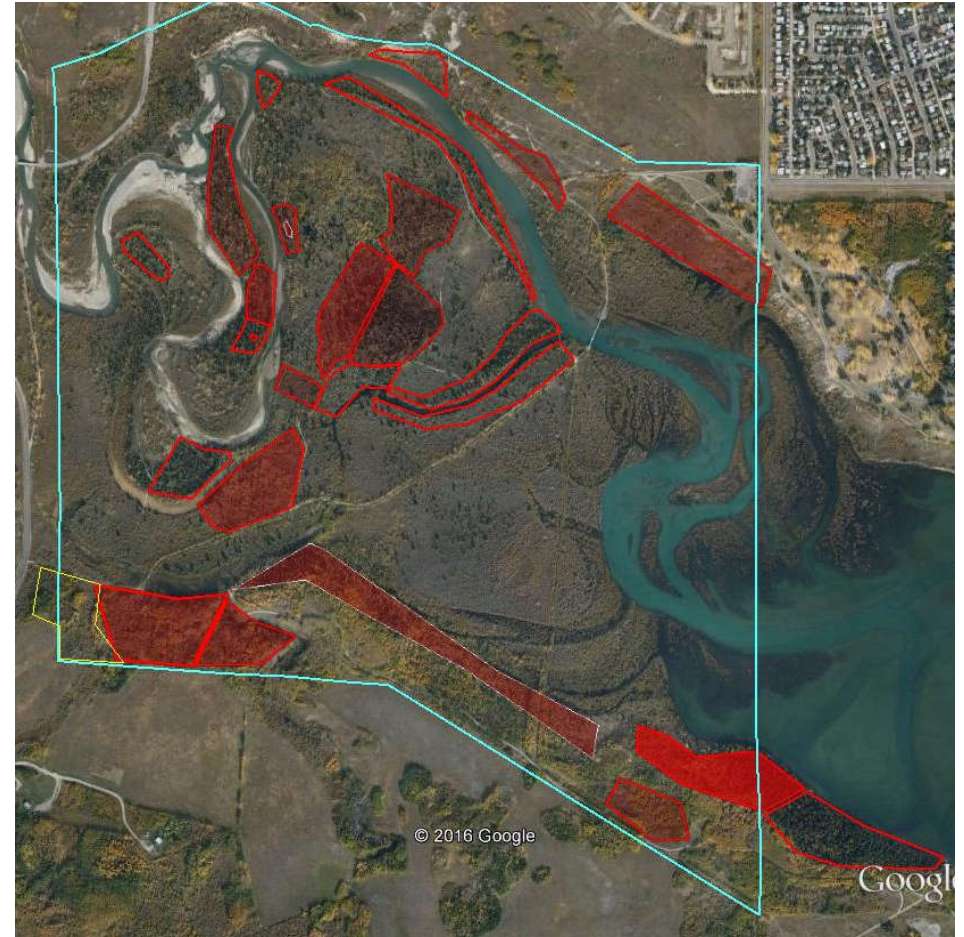
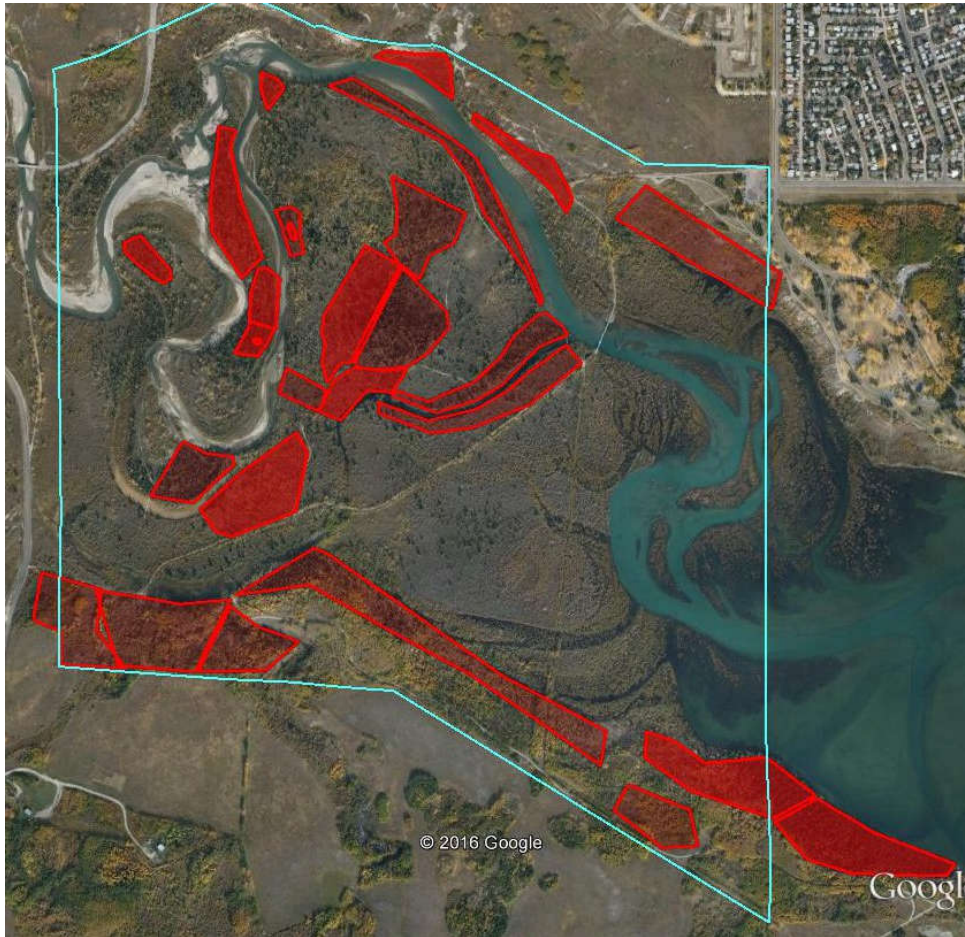


Over 5,000 non-native Peking cotoneaster (*Cotoneaster acutifolius*) shrubs have been removed from the Weaselhead since 2009.

We track changes in the distribution and density of the different invasive plants using GoogleEarth. An example of the change in the distribution and abundance of cotoneaster since the start of the Program is shown below:



Left – cotoneaster distribution at the start of the project in 2009 (red shows infested areas: the brighter the colour - the denser the cotoneaster.)

Right - at the end of 2015

(Blue outline shows the Park boundary.)

Over 20% of the Weaselhead was infested with cotoneaster in 2009 (about 48ha). Of this 26ha have been weeded at least once. From the records we keep of weeding the density of cotoneaster in these infested areas is on average 190plants/ha, made up of small, medium and large plants as described below

Below – the amount of cotoneaster is easily seen in fall when the leaves turn orange (Jack Rabbit Trail, Weaselhead/South Glenmore Park)

density (plants/ha)

