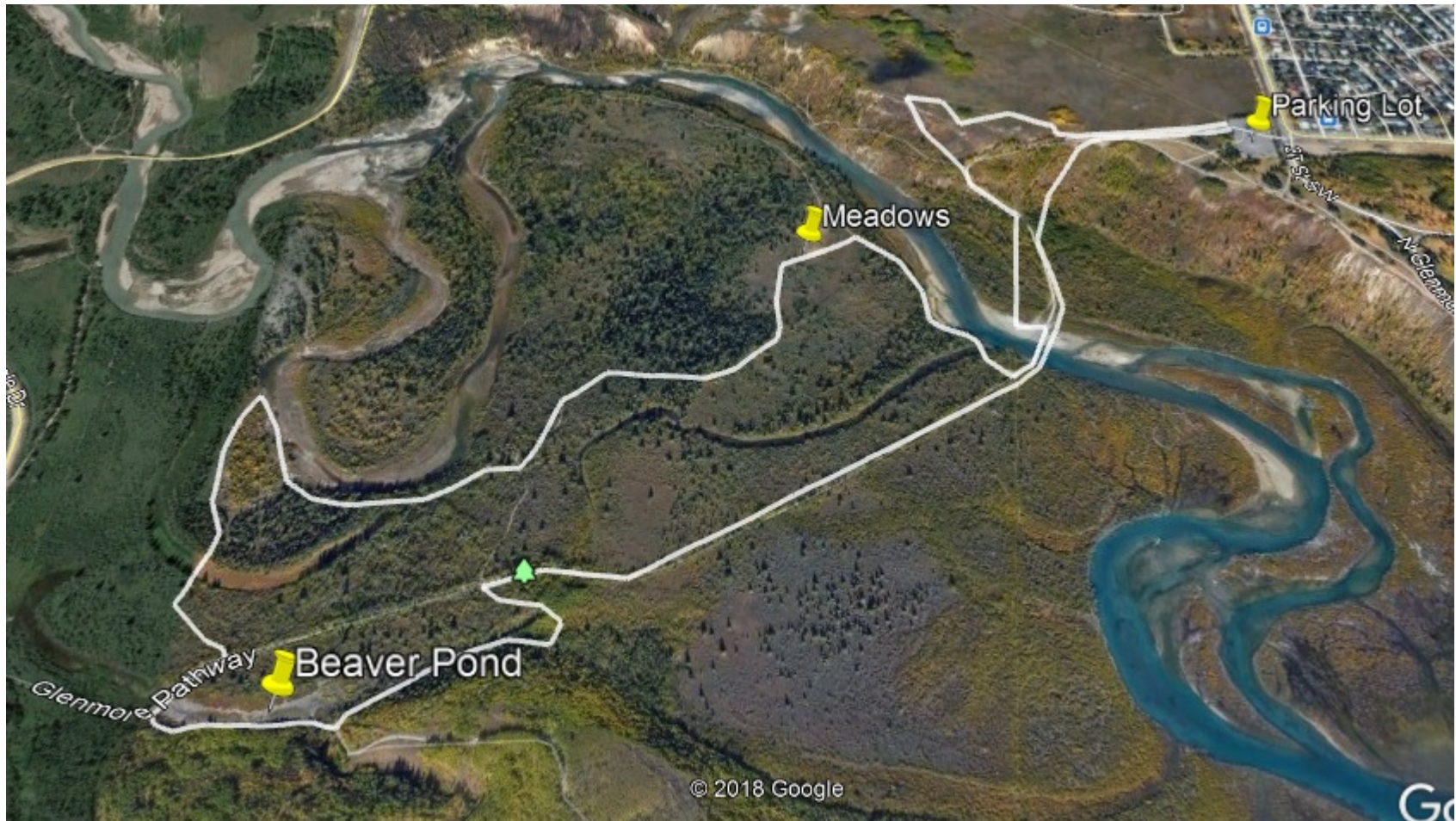


List of flowering plants observed in anthesis (with at least 1 flower bud open). The survey includes all Magnoliophyta (flowering plants), except Poaceae (grasses), Cyperaceae (sedges) and Juncaceae (rushes).

WeaselheadPark - May Flowering Species Count. Date: May 26th 2018			
#	Species	Common Name	Specimen Habitat
1	<i>Caragana arborescens</i> Lam.	caragana	Grasslands*
2	<i>Taraxacum officinale</i> F.H.Wigg.	common dandelion	Grasslands*
3	<i>Thermopsis rhombifolia</i> (Nutt. ex Pursh) Nutt. ex Richardson	golden bean	Grasslands
4	<i>Prunus virginiana</i> L.	chokecherry	Grasslands
5	<i>Amelanchier alnifolia</i> (Nutt.) Nutt. ex M. Roem.	saskatoon	Grasslands
6	<i>Salix bebbiana</i> Sarg.	Bebb's willow	Grasslands
7	<i>Shepherdia canadensis</i> (L.) Nutt.	buffaloberry	Grasslands
8	<i>Comandra umbellata</i> (L.) Nutt.	bastard toaflex	Badlands
9	<i>Viola adunca</i> Sm.	hookedspur violet	Grasslands
10	<i>Maianthemum stellatum</i> (L.) Link	star-flowered Solomon's seal	Badlands
11	<i>Geum triflorum</i> (L.) Link	old man's whiskers	Badlands
12	<i>Lithospermum ruderale</i> Douglas ex Lehm.	western stoneseed	Grasslands
13	<i>Elaeagnus comutata</i> Bernh. ex Rydb.	silverberry	Grasslands
14	<i>Ribes aureum</i> Pursh	golden currant	Grasslands
15	<i>Fragaria virginiana</i> Duchesne	Virginia strawberry	Grasslands
16	<i>Dasiphora fruticosa</i> (L.) Rydb.	shrubby cinquefoil	Grasslands
17	<i>Zizia aptera</i> (A. Gray) Fernald	meadow zizia	Grasslands
18	<i>Astragalus agrestis</i> Douglas ex G. Don	purple milkvetch	Grasslands
19	<i>Medicago sativa</i> L.	alfafa	Grasslands*
20	<i>Ribes oxycanthoides</i> L.	Canadian gooseberry	Grasslands
21	<i>Lathyrus ochroleucus</i> Hook.	creamy peavine	Grasslands
22	<i>Cornus sericea</i> L.	red-osier dogwood	Valley south slope
23	<i>Actaea rubra</i> (Aiton) Willd.	red and white baneberry	Aspen forest
24	<i>Salix lutea</i> Nutt.	yellow willow	Riparian
25	<i>Rhamnus cathartica</i> L.	common buckthorn	Valley south slope*
26	<i>Salix petiolaris</i> Sm.	meadow willow	Riparian
27	<i>Salix discolor</i> Muhl.	pussy willow	Riparian
28	<i>Salix pseudomonticola</i> C.R. Ball	false mountain willow	Riparian
29	<i>Salix exigua</i> Nutt.	sandbar willow	Riparian
30	<i>Betula occidentalis</i> Hook.	water birch	Riparian
31	<i>Arctostaphylos uva-ursi</i> (L.) Spreng.	kinnikinnick/bearberry	Meadows
32	<i>Geocaulon lividum</i> (Richards.) Fern.	false toadflax	Spruce forest
33	<i>Thalictrum venulosum</i> Trel.	veiny meadow rue	Spruce forest
34	<i>Corallorhiza trifida</i> Chatelain	pale coralroot	Moist spruce forest
35	<i>Clematis occidentalis</i> (Hornem.) DC.	purple clematis	Spruce forest
36	<i>Mertensia paniculata</i> (Aiton) G. Don	tall bluebells	Spruce forest
37	<i>Prosartes trachycarpa</i> S. Watson	roughfruit fairybells	Moist spruce forest
38	<i>Salix amygdaloides</i> Andersson	peachleaf willow	Aspen forest
39	<i>Rubus pubescens</i> Raf.	dwarf red raspberry	Riparian
40	<i>Crataegus chrysocarpa</i> Ashe	fireberry hawthorn	Aspen forest
41	<i>Astragalus bisulcatus</i> (Hook.) A. Gray	two-grooved milkvetch	Riparian
42	<i>Dryas drummondii</i> Richardson ex Hook.	Drummond's mountain-avens	Riparian
43	<i>Viburnum edule</i> (Michx.) Raf.	low-bush cranberry	Riparian
44	<i>Viola canadensis</i> L.	Canada violet	Riparian
45	<i>Petasites frigidus</i> (L.) Fr.	Arctic sweet coltsfoot	Moist spruce forest
46	<i>Euphorbia esula</i> L.	leafy spurge	Valley south slope*
47	<i>Vicia americana</i> Muhl. ex Willd.	American vetch	Valley south slope
48	<i>Astragalus laxmannii</i> Jacq.	prairie milkvetch	Grasslands
49	<i>Linum lewisii</i> Pursh	blue flax	Grasslands
50	<i>Lonicera tatarica</i> L.	tatarian honeysuckle	Grasslands*

\* Introduced species.



Path of the 2018 May flower count (May 26<sup>th</sup>). The path has 5.6km and it was completed in approximately 5 hours.